

BLECHSCHLOSS

VENUE SPECS 2022

SCHEUNE BLECHSCHLOSS

temporary Pop-up-Club since 2021 run by:

scheune e.V.
Alaunstrasse 36-40
01099 Dresden
Germany

www.scheune.org

facebook.com/scheunedresden
instagram.com/scheunedresden
twitter.com/scheunedresden

venue info@scheune.org
pa/lights falk@scheune.org
booking booking@scheune.org
public relations presse@scheune.org
phone ++ 49 (0)351 323 556 40

Technical Rider	2
Event Room Settings	3
Map / Directions / Parking	5
Bandapartment	6
Contacts	7

TECHNICAL RIDER

F.O.H.

Soundcraft SI Compact C 16 (digital)
w/ 16 mono inputs and 2 stereo channels /
14 sub-group / aux busses

MONITORING

3 x the box MA120 MKII active

P.A.SYSTEM

2 x Studt Akustik S12 - 250 W (top)
2 x Studt Akustik S115 - 700 W (sub)
amping: Yamaha P4500 / P7000

MICROPHONES

2 x Shure SM91
2 x EV RE20
6 x Shure SM57
6 x Shure SM58
1 x Audix D6
3 x Sennheisser e604
2 x Oktava MK 012-01
1 x Sennheisser MD 421
3 x Beyerdynamic M201N
3 x AKG C1000
1 x Neumann KM100
6 x ATM 350
2 x Shure SM58 S8 & BLX24 wireless
1 x Sennheisser EW 100-835 G3 wireless

Help us to live a sustainable club culture and please check your production for environmentally friendly production processes! Please use public transport, don't travel in unnecessarily large groups, check your rider and feel free to use our equipment!

DI

5 x BSS AR 133
2 x Samson S.direct plus
4 x passive

STANDS

11 large, Tripod with boom
4 small, Tripod with boom

DJ EQUIPMENT

PLAYER

4 x Technics 1210 MK2
2 x Pioneer CDJ 400 Single CD/USB Player
1 x Numark NDX 500 Single CD/USB Player
1 x Numark CDN22 MK4 Double CD Player

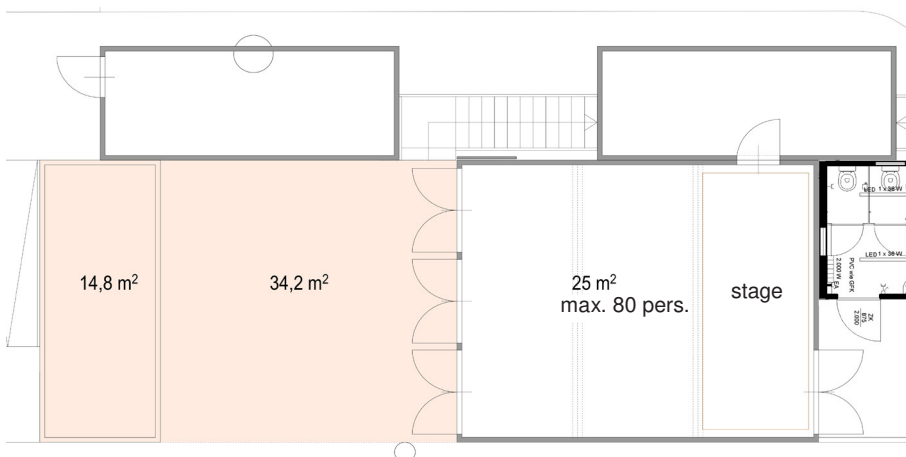
MIXER

1 x Pioneer DJM 900 Nexus
1 x Pioneer DJM 3000
1 x Pioneer DJM 400
... for live setting: 1 x Soundcraft EFX 8

We can also provide you a professional recording of your concert. For more information, please feel free to contact our technical crew.

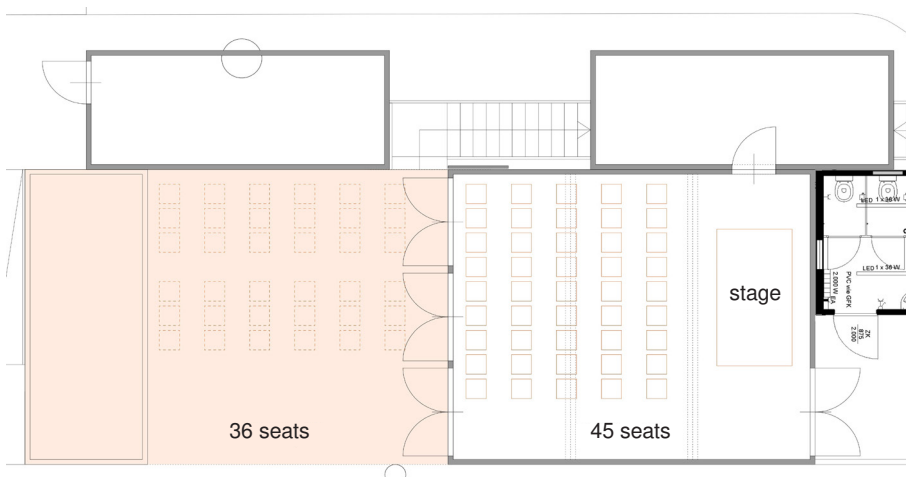
... for further questions feel free to contact our technician Falk: falk@scheune.org

EVENT ROOM SETTINGS



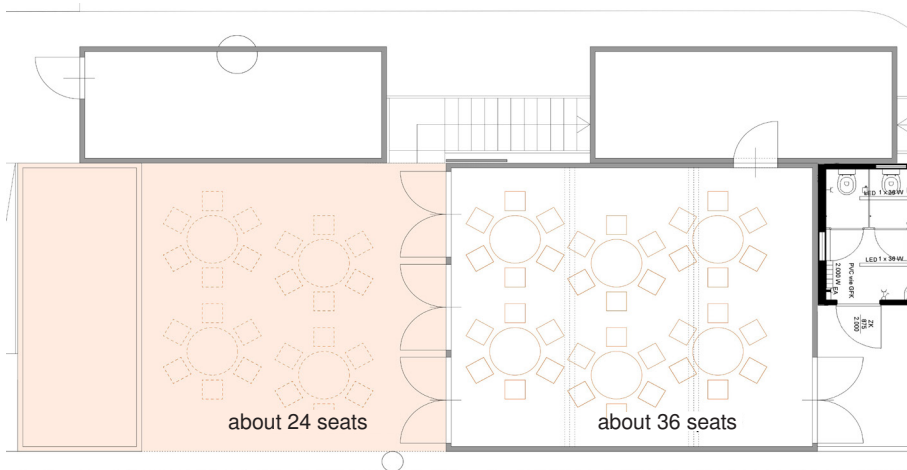
Concert

- ▶ inside: 80 persons
- ▶ small stage w/ different lighting situations
- ▶ no bar but vending machine with soft drinks
- ▶ outside: possibility for the public to hang out



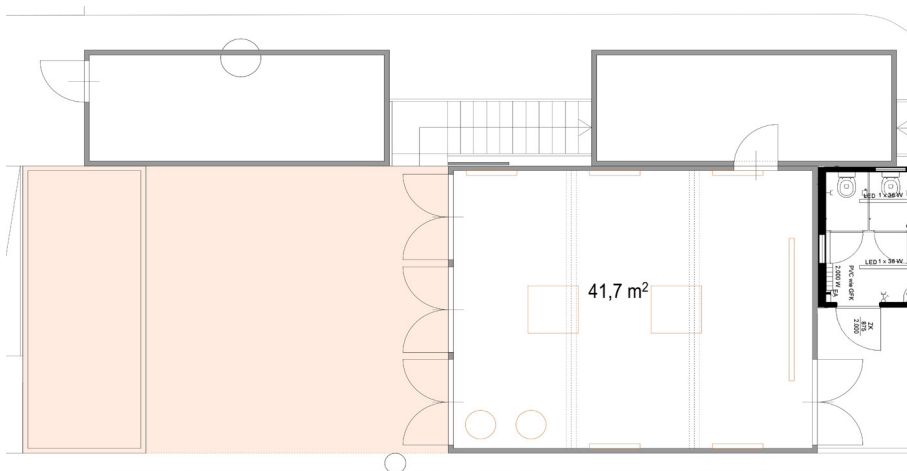
Reading

- ▶ inside: 45 seats
- ▶ small stage w/ different lighting situations
- ▶ no bar but vending machine with soft drinks
- ▶ outside: possibility for 36 seats more



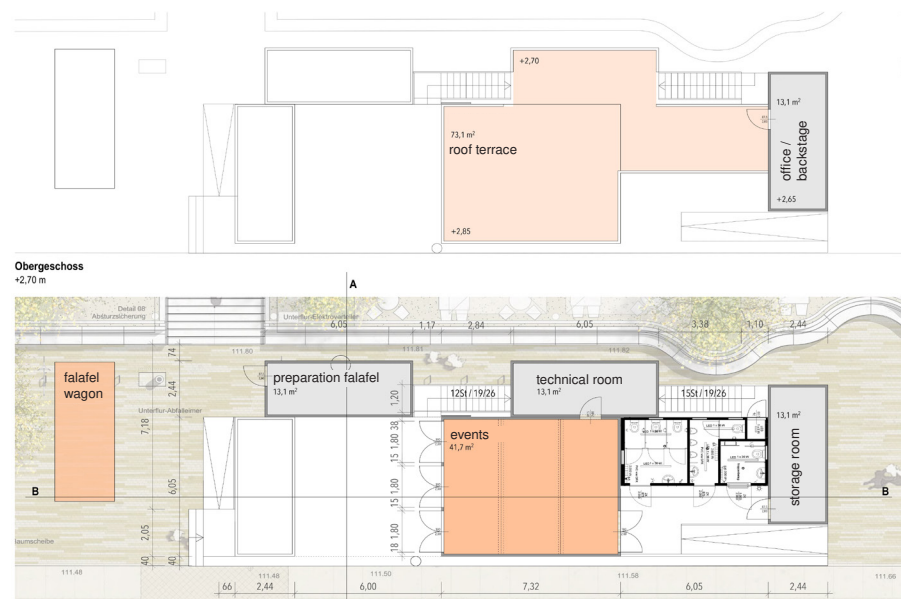
Workshop

- ▶ inside: 36 seats and 6 tables
- ▶ no bar but vending machine with soft drinks
- ▶ outside: possibility for 24 seats and 4 tables more



Exhibition

- ▶ inside: nearly 42 m² exhibition space
- ▶ 3 big walls w/ different lighting situations
- ▶ no bar but vending machine with soft drinks
- ▶ outside: possibility for the public to hang out



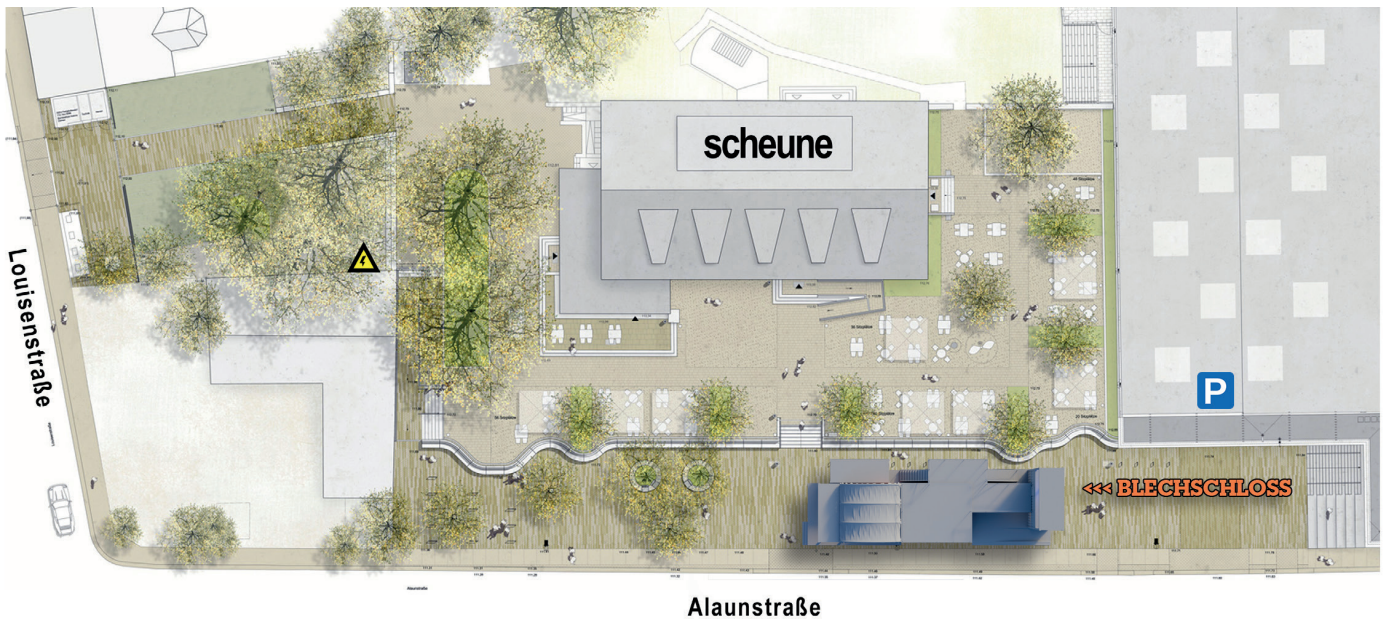
Roof terrace and Backstage

- ▶ a roof terrace extends over almost the entire area of the event location
- ▶ through this you can enter the small backstage, which is located in a separate container

MAP / DIRECTIONS / PARKING

- leave the Autobahn at the exit „Hellerau“
- follow the signs leading to „Zentrum“ (will lead to route „170“ a.k.a. Hansastrasse) for 4,3 km
- drive to the left lane heading to the Station Neustadt („Löbnitzstrasse“)
- follow Löbnitzstrasse, crossing the traffic lights straight ahead („Königsbrücker Strasse“) to enter „Louisenstrasse“
- going straight on, crossing the „Alaunstrasse“ and turn into the next possible entry on the right side short before the big graffiti-walled house

VAN / CAR PARKING search nearby or use the paid parking garage next to the Blechschloss



TRAVEL INFORMATION

Distance to airport: 8 km / 5 mi / 15 min
 Distance to main train station: 4 km / 2,5 mi / 8 min
 GPS: 51°03'58.1"N 13°45'07.3"E

OTHER

Mechandise fee: no
 Laundry services nearby: yes
 Hotel: several, all walking distance

scheune e.V.

Alaunstr. 36-40
 01099 Dresden
 Germany

Venue Specs
 Page

5

www.scheune.org

fb.com/scheunedresden
 ph.: (+49) 0351 323 556
 info@scheune.org

BAND APARTMENT

scheune is able to provide an own band apartment for accommodation incl.:

- 1 small room with 3 single beds**
- 1 big room with 3 single beds and 1 double bed**
- 1 bath room**
- + facilities to make coffee/tea**

Free WiFi available!

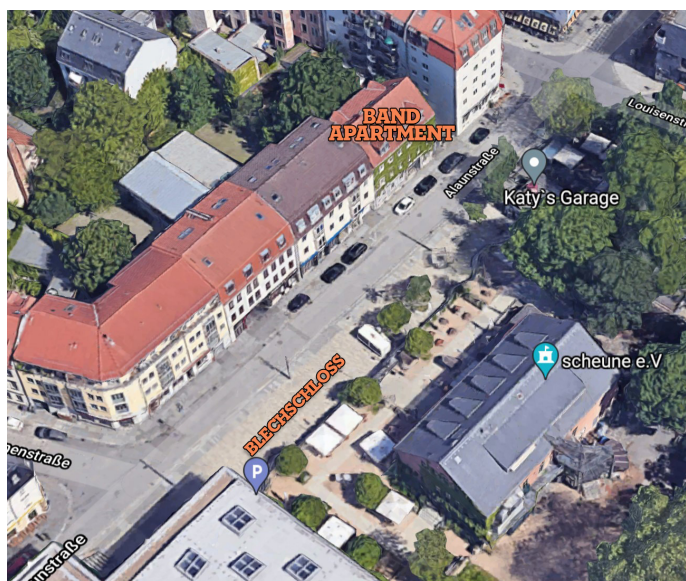
Find the access information inside the apartment.

Check in by arrangement / Check out till 11 AM!

APARTMENT ADDRESS

Alaunstrasse 43
(3rd floor)
01099 Dresden

Find it here!



Parking during your stay

search nearby or use the paid parking garage next to the Bleichschloss

Breakfast options

in various bakeries and breakfast restaurants nearby



Small room with 3 beds



Bathroom



Large room with 4 beds



scheune e.V.

Alaunstr. 36-40
01099 Dresden
Germany

Venue Specs
Page

6

www.scheune.org

fb.com/scheunedresden
ph.: (+49) 0351 323 556
info@scheune.org

CONTACTS

ADDRESS

scheune e.V.
Alaunstrasse 36-40
01099 Dresden
Germany

CONTRACTING PARTNER

scheune e.V.
ceo: Romy Jaehnig

Phone 0049 (0)351 32355640
Mail info@scheune.org
Website www.scheune.org

Facebook facebook.com/scheunedresden
Instagram instagram.com/scheunedresden
Twitter twitter.com/scheunedresden
YouTube youtube.com/scheunedresden

STAFF

SOUND / LIGHTING / TECH
Falk / falk@scheune.org

BOOKING / PRODUCTION
Frank / booking@scheune.org

PRESS / PR
Stephan / presse@scheune.org

CEO / MANAGEMENT
Romy / gf@scheune.org

SCHEUNE FORECOURT MANAGEMENT
Olaf / olaf.hornuf@scheune.org

SCHEUNE AKADEMIE / MUSIC MATCH
Ben / akademie@scheune.org

