

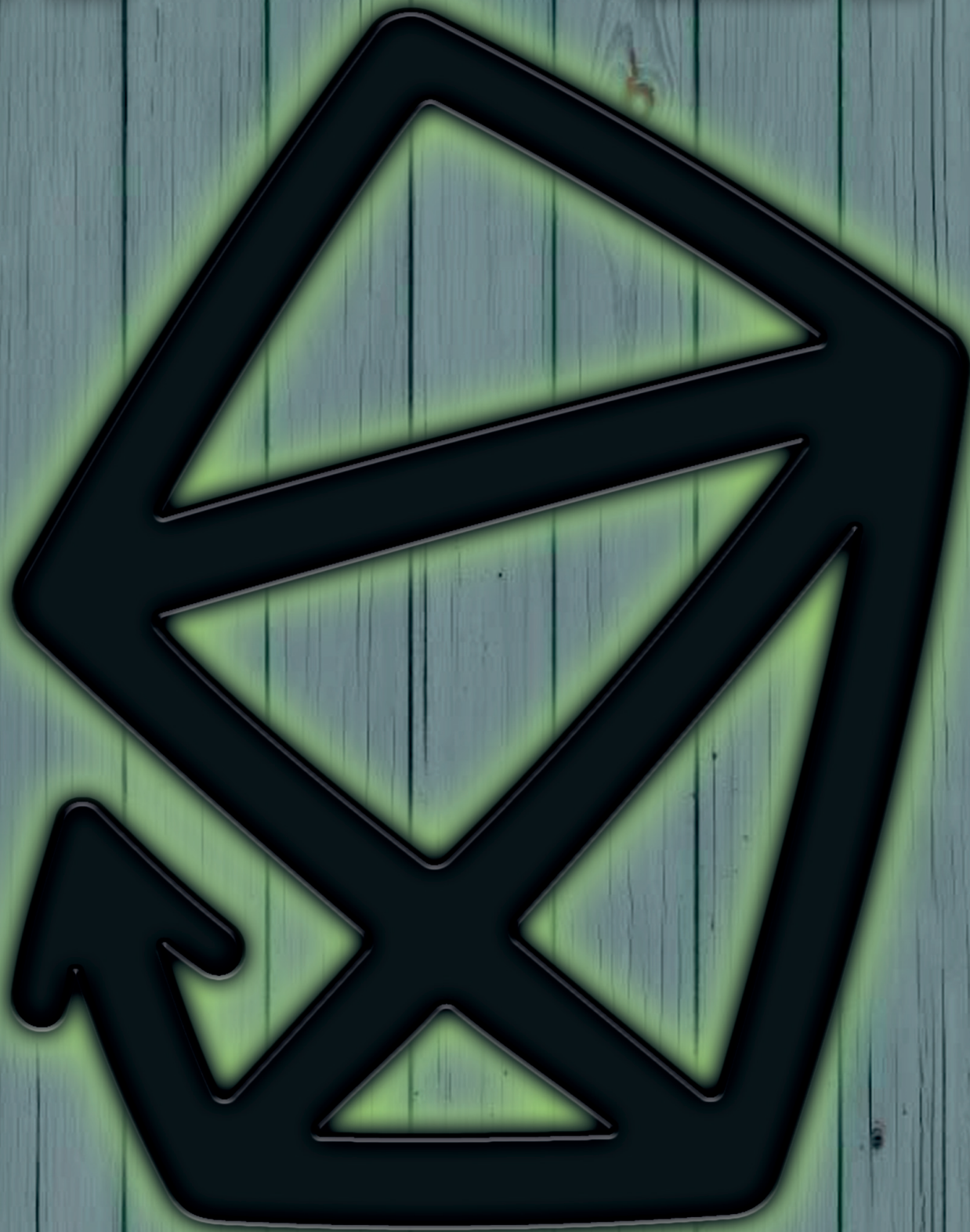
SCHEUNE

DRESDEN

EST. 1951

**VENUE
PITCH**

REOPENING 2026





ABOUT SCHEUNE

The **Scheune** has been the cultural heart of Dresden's Neustadt district since 1951. Built from the rubble of a former gymnasium, it has provided generations with a meeting space for concerts, readings, cabaret, performances, and parties—often pioneering new music genres and art forms. Since 2007, the non-profit scheune e.V. has operated the venue, hosting more than 300 events annually with over 80.000 visitors, and participating in festivals such as the Bunte Republik Neustadt, the Schaubudensommer theatre festival, and the DAVE Festival.

In 2021, the venue entered an extended renovation period to improve fire safety, accessibility, and sustainability. During the closure, the association launched interim formats such as the pop-up club "Blechs Schloss" and a diverse "Off-Site" programme. After nearly five years of construction, the Scheune will reopen in September 2026 with expanded spaces, state-of-the-art technology, and new possibilities for spatial use. You are warmly invited to enrich this contemporary event venue in the heart of Neustadt with your own contributions. The scheune e.V. programme team is open for proposals, suggestions and ideas.





PROGRAM FOCUS

The Scheune is a versatile event venue in terms of styles, themes and formats. Scheune is hosting:

- **live music concerts** with a wide range in terms of genre and formats from local newcomers to established domestic and international artists such as KRAFTKLUB, DIE TOTEN HOSEN, KREATOR, SEUN KUTI & EGYPT 80, FEIST, CLUESO, CRO, SHELLAC, ANNENMAYKANTEREIT, FEINE SAHNE FISCHFILET, JELLO BIAFRA, SOULFLY, ONYX, HOT WATER MUSIC, ALLE FARBEN, GUS GUS, WHO MADE WHO, THE BUSTERS, BRUTUS, MAD PROFESSOR and many more
- the longest running and most popular **Poetry Slam** in town
- the longest running and most popular **Reading Stage** in town: Sax Royal
- **comedy and contemporary literature events** with artists such as Till Reiners, Moritz Neumeier, Marc Uwe Kling, Harry Rowolth, Sophie Passmann and many more
- **art and creative markets** such as T-Shirt Fest Dresden, the Coloured Gigs Gigposter convention or urban art and flea markets
- the **Music Match Festival** with integrated conference with a discursive focus on the realms between pop culture/music and politics/society (www.music-match.biz)
- discursive and participatory workshops, panels, and lectures on socio-political and neighborhood-related topics



The scheune e.V. is responsible for the programmatic design of the scheune program. We are very happy to work directly with agencies and artists to optimize productions in terms of communication and economics. We have a team of experienced bookers who are thematically diverse, familiar with the local characteristics of Dresden's unique cultural landscape, and open to inquiries and offers. Don't hesitate to contact us directly!

Nevertheless, the venue is also open to event agencies and independent organizers and it's spaces can be rented. We are happy to provide our rental conditions on request and are open to inquiries and offers. However, we reserve the right to reject topics that we do not consider to be part of our program or that are not compatible with the self-image of scheune e.V. Only the event rooms in the building can be rented; outdoor events can only be held with scheune e.V. as the organizer.

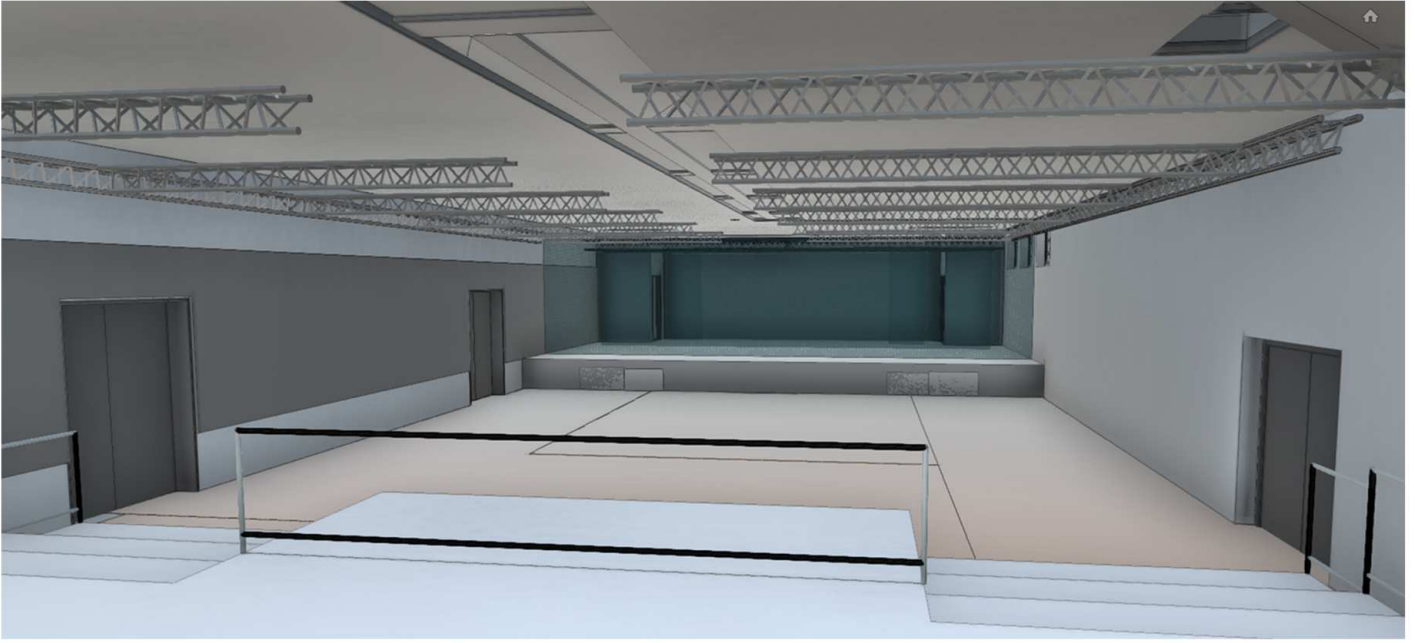


LARGE STAGE

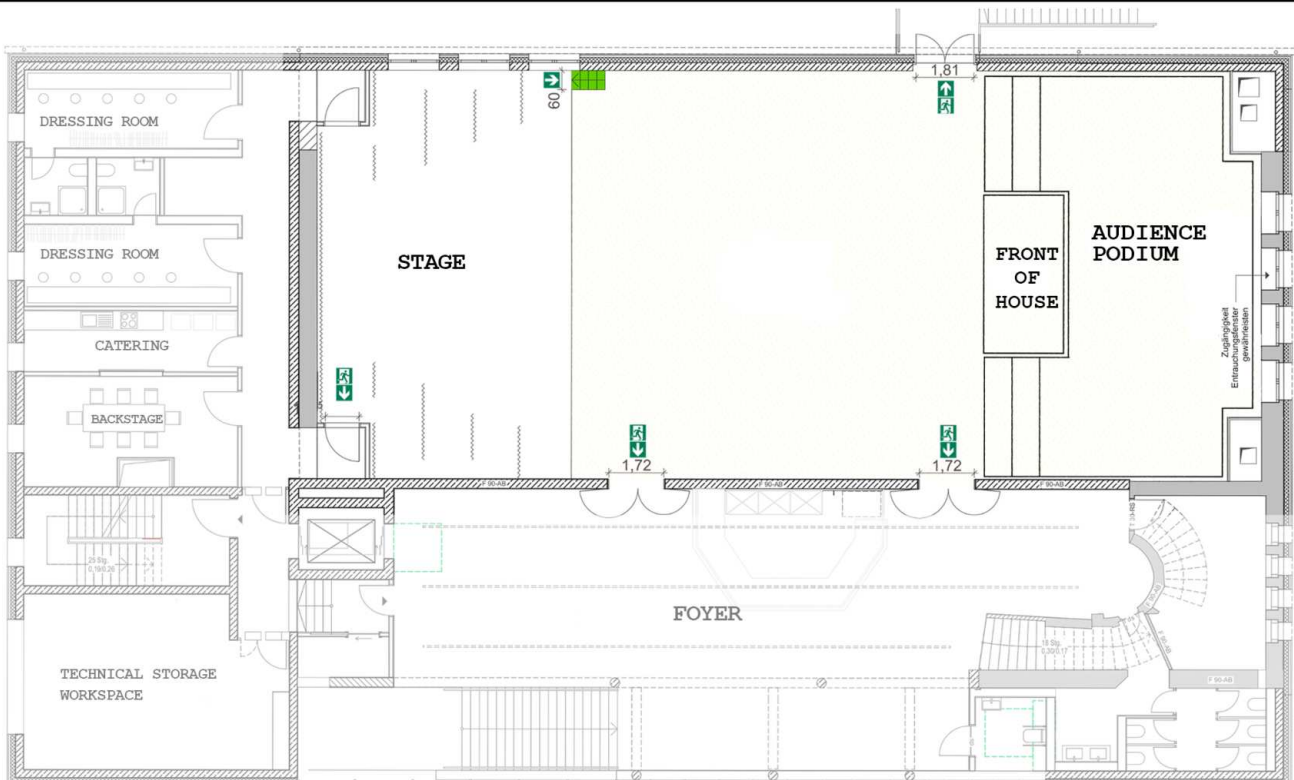
DESTINATION: 1ST FLOOR

SIZE: 297 M²

CAPACITY: 540/330



- Room Size: 297 m² / width 12,50 m / depth 24 m / 4,00 m ceiling
- Capacity unseated: 540
- Capacity Seated: 330
- Audience podium: in the rear third of the hall (approx. 75 m²)
- Stage size: width 9 m / depth 7 m / 0,8 m height / 3,00 m ceiling
- Stage Power: 2 x 63 A CEE
- PA System: d&b Q1/B2/Q Sub w/ d&b Amping
- Monitoring: d&b M4
- FOH: Soundcraft Vi3000 (digital) w/ Soundcraft Vi Stagebox 48 CH (digital)
- Light Desk: MA Lighting dot2 XL-F + MA dot2 F-wing Faderwing



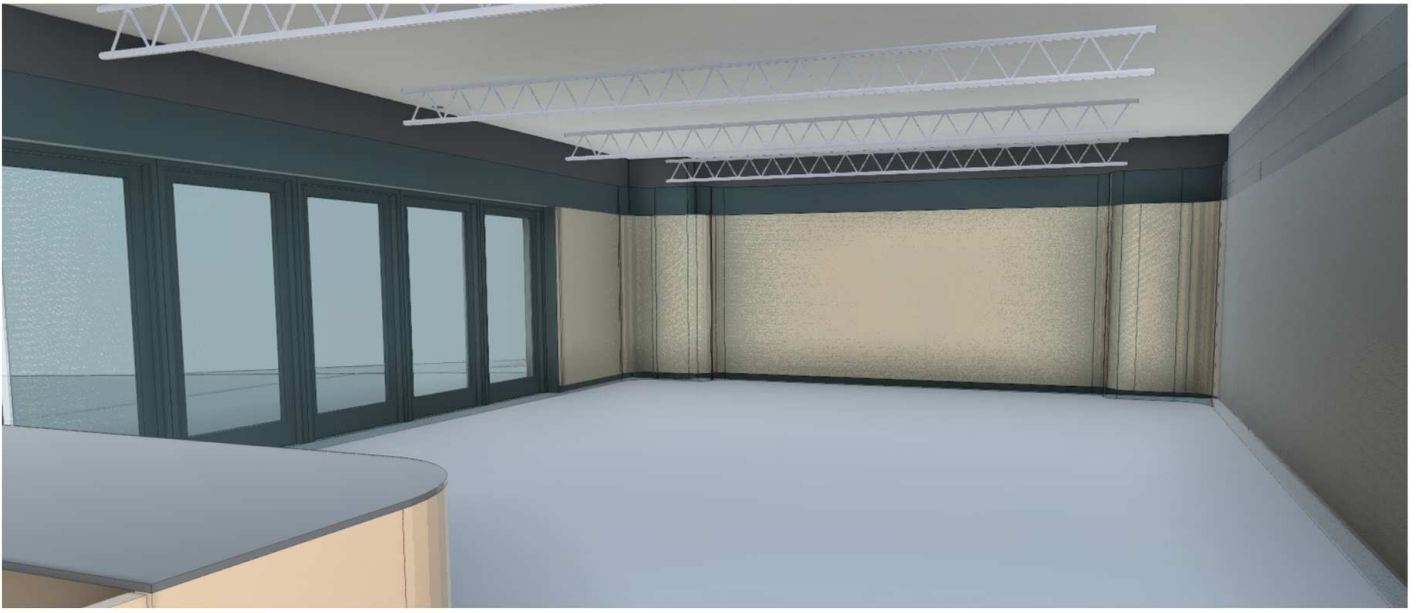


SMALL STAGE

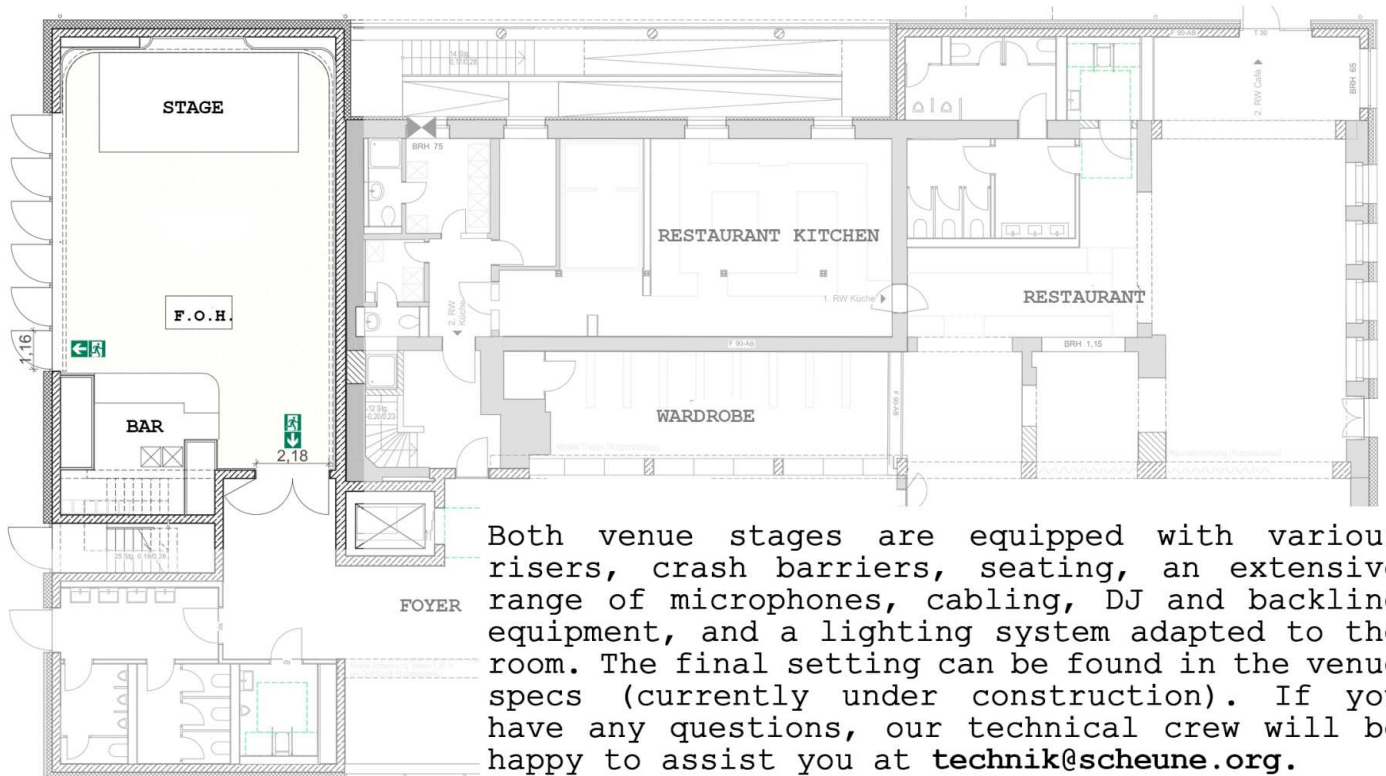
DESTINATION: GROUND FLOOR

SIZE: 95 M²

CAPACITY: 196/87



- Room Size: 95 m² / width 8,00 m / depth 12 m / 3,10 m ceiling
- Capacity unseated: 196
- Capacity seated: 87
- Stage Size: width 5 m / depth 3 m / height 0,4 m / 2,70 m ceiling
- Stage Power: 1 x 32 A CEE + 1 x 16 A CEE
- PA: 2 x Studt Akustik S12 / S115 / d&b B1
w/ Yamaha Amping and d&b B1 Control Unit
- Monitoring: RCF NX-10 active
- FOH: Allen & Heath SQ 5 (digital)
w/ Allen & Heath DX168/X Audio Rack Digital-Stagebox
- Light Desk: MA Lighting dot2 XL-F



Both venue stages are equipped with various risers, crash barriers, seating, an extensive range of microphones, cabling, DJ and backline equipment, and a lighting system adapted to the room. The final setting can be found in the venue specs (currently under construction). If you have any questions, our technical crew will be happy to assist you at technik@scheune.org.



CONFERENCE ROOM

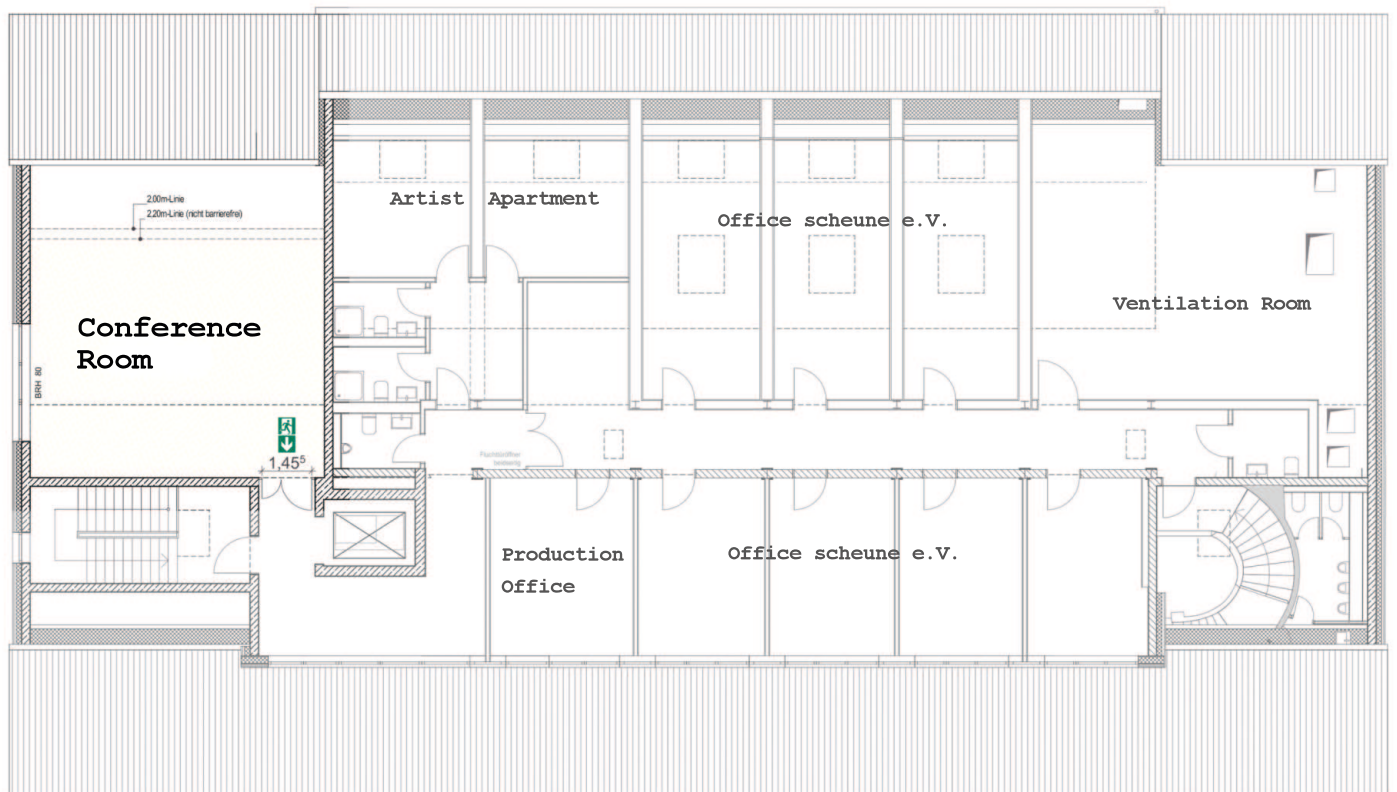
DESTINATION: 2ND FLOOR

SIZE: 63 M²

CAPACITY: 57



- Room Size: 63 m² / width 8,00 m / depth 8 m / 2-5 m ceiling (sloping roof)
- Capacity unseated: <100
- Capacity seated: 57
- Room Type: white cube room for flexible use / furnishing available
- Stage Power: multiple 220 V power outlets
- Sufficient conference and folding chairs as well as tables for various scenarios are available, flipchart and 65" LED screen on a tripod are available, additional technical equipment (sound system/projector/etc.) is available upon consultation with our technical team.





BACKSTAGE AREA

DESTINATION: 1ST FLOOR / BEHIND THE STAGE

The backstage area includes **two separate artists' dressing rooms**, each with a shower and toilet, a **catering kitchen** with an induction hob, refrigerator, oven, microwave, and dishwasher, as well as basic cooking and dining utensils and cutlery, and a **common room** with a direct pass-through to the kitchen.

The backstage area is accessible via the second staircase away from the audience flow and has direct stage access in Hall 1. The backstage and hall levels are accessible via elevator without steps.

An additional **production office** is available on demand.



ARTIST APARTMENT

DESTINATION: 2ND FLOOR

Our Artist Apartment is available as accommodation for all artists performing with us by arrangement. It comprises two guest rooms, each with 2-3 beds, and two bathrooms, each with a toilet/shower, and it is located directly in the attic of the house.



PRODUCTION ISSUES

Extensive accessibility is ensured by, among other things, all areas being accessible by elevator and free of steps, barrier-free restrooms on all floors, induction loops installed in all halls, disabled parking spaces directly adjacent to the building, and step-free access to the building.

There are limited parking spaces for production vehicles in the back of the building. Nightliner coaches can be parked (after prior consultation) and connected to electricity on the forecourt of the building at Alaunstrasse.

Depending on the scope and type of events, we reserve the right to use several of the designated rooms at the same time.



GET IN TOUCH

Do you have further questions, or would you like a more detailed overview of the program and the possibilities offered by the Scheune? Or are you interested in hosting an event with us? If so, please feel free to contact us via the following channels:



SCHEUNE / scheune e.V.
Alaunstrasse 36-40
01099 Dresden
Germany



0049 (0)351 32355640



info@scheune.org



www.scheune.org



www.facebook.com/scheunedresden



www.instagram.com/scheunedresden



https://bsky.app/profile/scheunedresden.bsky.social



https://mastodon.social/@scheune@dresden.network



www.youtube.com/user/scheunedresden

CONTACT PERSONS

Booking / Production / Rentals:
Frank Schöne & Michaela Jarosch
booking@scheune.org

CEO:
Romy Jaehnig
gf@scheune.org

Sound / Lighting / Tech:
Falk Scheffler
technik@scheune.org

Outdoor Management:
Olaf Hornuf
raumlabor@scheune.org

Public Relation:
Levi van Huijgevoort
presse@scheune.org

Music Match:
Ben Zschorn
ben.zschorn@scheune.org

Scheune Dresden is operated by the non-profit association scheune e.V.
Chairs persons are: **Yvonne Bonfert | Frank Schöne | Friedemann Gruss**
