

# BLECHSCHLOSS

## VENUE SPECS 2022

### SCHEUNE BLECHSCHLOSS

temporary Pop-up-Club since 2021 run by:

scheune e.V.  
Alaunstrasse 36-40  
01099 Dresden  
Germany

#### **www.scheune.org**

facebook.com/scheunedresden  
instagram.com/scheunedresden  
twitter.com/scheunedresden

**venue** info@scheune.org  
**pa/lights** falk@scheune.org  
**booking** booking@scheune.org  
**public relations** presse@scheune.org  
**phone** ++ 49 (0)351 323 556 40

<b>Technical Rider</b>	<b>2</b>
<b>Event Room Settings</b>	<b>3</b>
<b>Map / Directions / Parking</b>	<b>5</b>
<b>Bandapartment</b>	<b>6</b>
<b>Contacts</b>	<b>7</b>

# TECHNICAL RIDER

## F.O.H.

Soundcraft SI Compact C 16 (digital)  
w/ 16 mono inputs and 2 stereo channels /  
14 sub-group / aux busses

## MONITORING

3 x the box MA120 MKII active

## P.A.SYSTEM

2 x Studt Akustik S12 - 250 W (top)  
2 x Studt Akustik S115 - 700 W (sub)  
amping: Yamaha P4500 / P7000

## MICROPHONES

2 x Shure SM91  
2 x EV RE20  
6 x Shure SM57  
6 x Shure SM58  
1 x Audix D6  
3 x Sennheisser e604  
2 x Oktava MK 012-01  
1 x Sennheisser MD 421  
3 x Beyerdynamic M201N  
3 x AKG C1000  
1 x Neumann KM100  
6 x ATM 350  
2 x Shure SM58 S8 & BLX24 wireless  
1 x Sennheisser EW 100-835 G3 wireless

... for further questions feel free to contact our  
technician Falk: [falk@scheune.org](mailto:falk@scheune.org)

## DI

5 x BSS AR 133  
2 x Samson S.direct plus  
4 x passive

## STANDS

11 large, Tripod with boom  
4 small, Tripod with boom

## DJ EQUIPMENT

### PLAYER

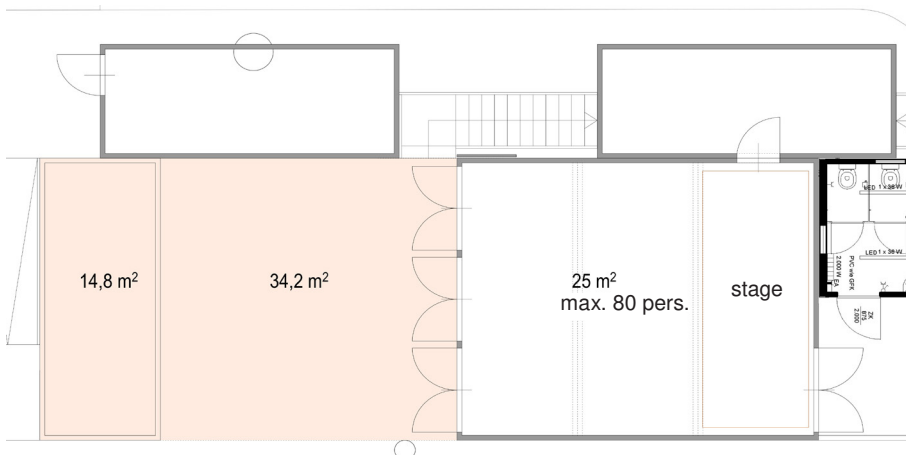
4 x Technics 1210 MK2  
2 x Pioneer CDJ 400 Single CD/USB Player  
1 x Numark NDX 500 Single CD/USB Player  
1 x Numark CDN22 MK4 Double CD Player

### MIXER

1 x Pioneer DJM 900 Nexus  
1 x Pioneer DJM 3000  
1 x Pioneer DJM 400  
... for live setting: 1 x Soundcraft EFX 8

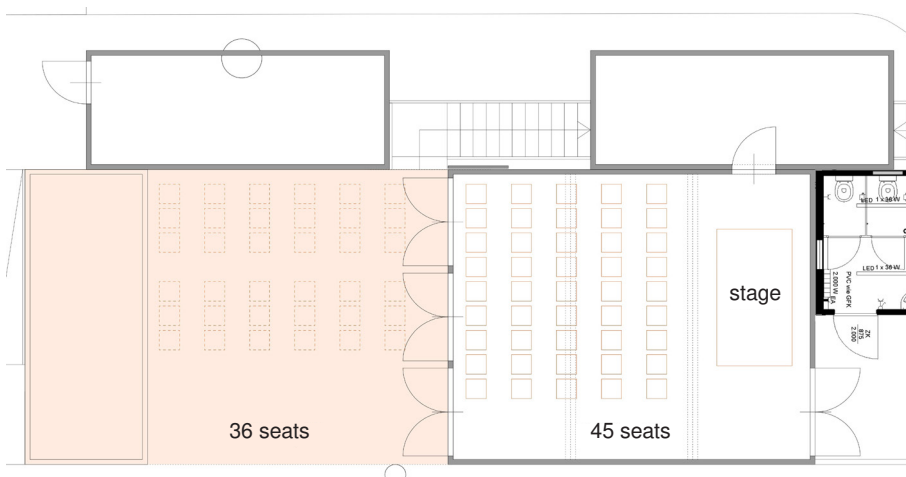
We can also provide you a professional  
recording of your concert. For more  
information, please feel free to contact  
our technical crew.

# EVENT ROOM SETTINGS



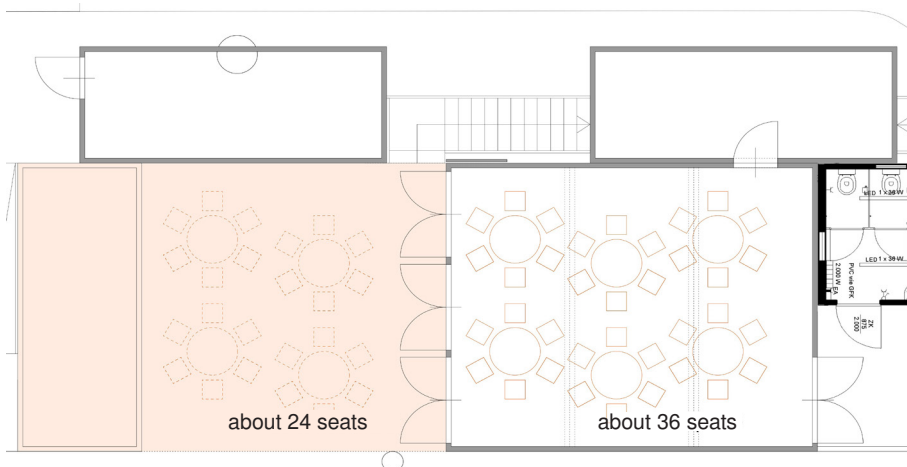
## Concert

- ▶ inside: 80 persons
- ▶ small stage w/ different lighting situations
- ▶ no bar but vending machine with soft drinks
- ▶ outside: possibility for the public to hang out



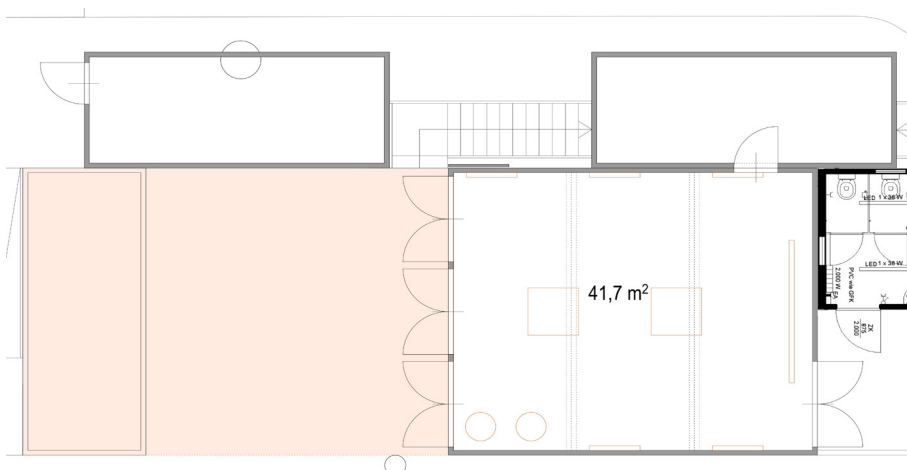
## Reading

- ▶ inside: 45 seats
- ▶ small stage w/ different lighting situations
- ▶ no bar but vending machine with soft drinks
- ▶ outside: possibility for 36 seats more



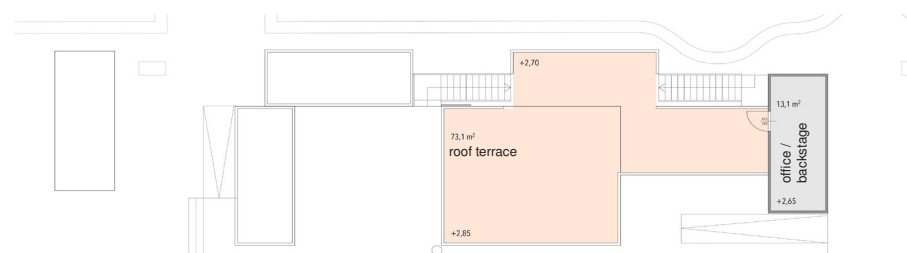
**Workshop**

- ▶ inside: 36 seats and 6 tables
- ▶ no bar but vending machine with soft drinks
- ▶ outside: possibility for 24 seats and 4 tables more



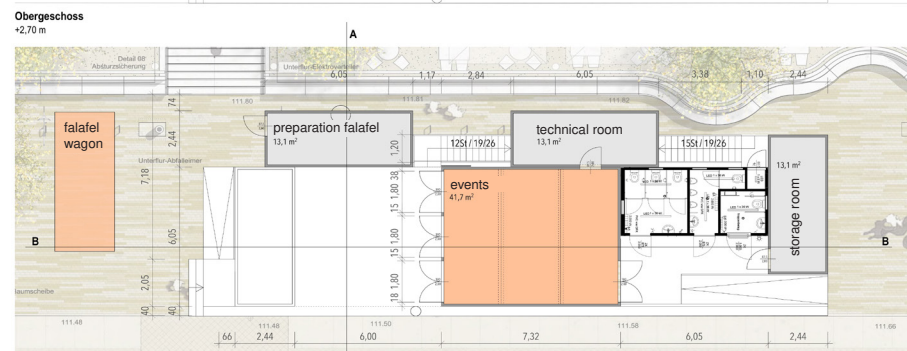
**Exhibition**

- ▶ inside: nearly 42 m<sup>2</sup> exhibition space
- ▶ 3 big walls w/ different lighting situations
- ▶ no bar but vending machine with soft drinks
- ▶ outside: possibility for the public to hang out



**Roof terrace and Backstage**

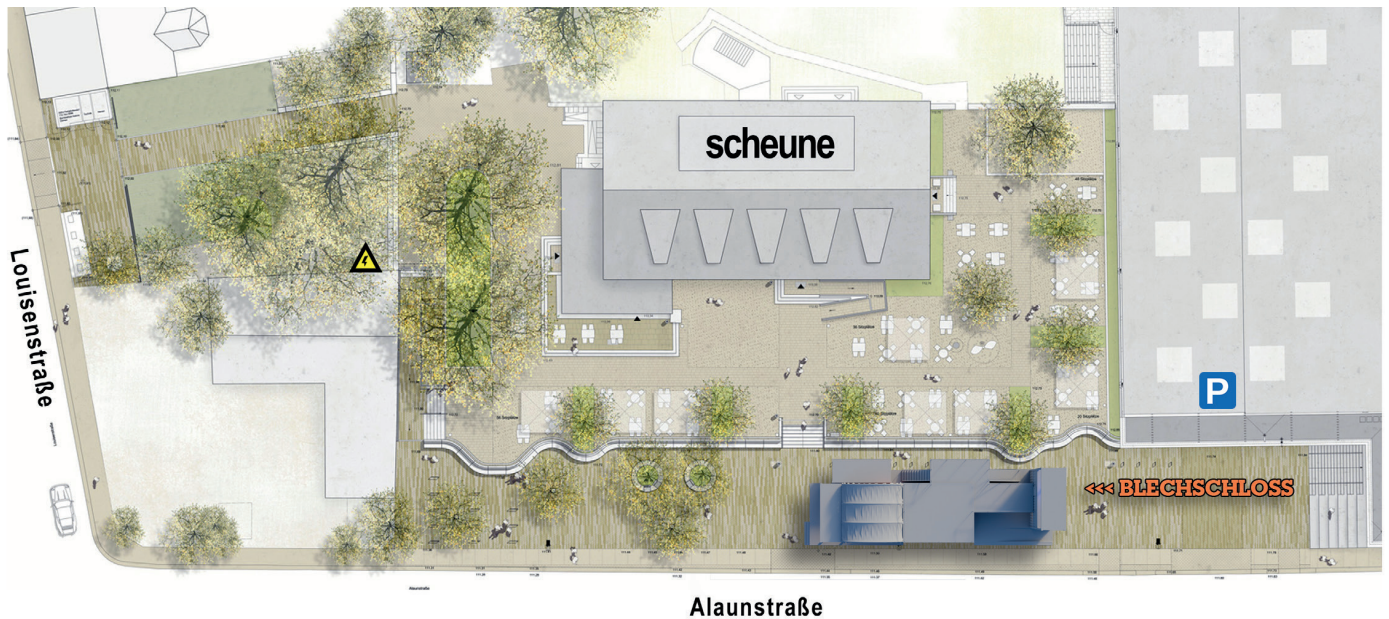
- ▶ a roof terrace extends over almost the entire area of the event location
- ▶ through this you can enter the small backstage, which is located in a separate container



# MAP / DIRECTIONS / PARKING

- ▶ leave the Autobahn at the exit „Hellerau“
- ▶ follow the signs leading to „Zentrum“ (will lead to route „170“ a.k.a. Hansastrasse) for 4,3 km
- ▶ drive to the left lane heading to the Station Neustadt („Löbnitzstrasse“)
- ▶ follow Löbnitzstrasse, crossing the traffic lights straight ahead („Königsbrücker Strasse“) to enter „Louisenstrasse“
- ▶ going straight on, crossing the „Alaunstrasse“ and turn into the next possible entry on the right side short before the big graffiti-walled house

**VAN / CAR PARKING** search nearby or use the paid parking garage next to the Blechschloss



## TRAVEL INFORMATION

Distance to airport: 8 km / 5 mi / 15 min  
 Distance to main train station: 4 km / 2,5 mi / 8 min  
 GPS: 51°03'58.1"N 13°45'07.3"E

## OTHER

Mechandise fee: no  
 Laundry services nearby: yes  
 Hotel: several, all walking distance

**scheune e.V.**

Alaunstr. 36-40  
 01099 Dresden  
 Germany

Venue Specs  
 Page

**5**

**www.scheune.org**

fb.com/scheunedresden  
 ph.: (+49) 0351 323 556  
 info@scheune.org

# BAND APARTMENT

scheune is able to provide an own band apartment for accommodation incl.:

- 1 small room with 3 single beds
- 1 big room with 3 single beds and 1 double bed
- 1 bath room
- + facilities to make coffee/tea

Free WiFi available!

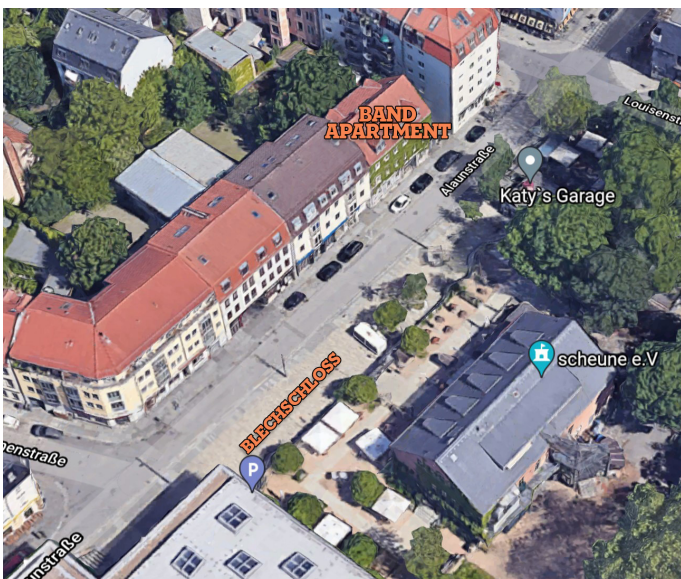
Find the access information inside the apartment.

Check in by arrangement / Check out till 11 AM!

## APARTMENT ADDRESS

Alaunstrasse 43  
(3rd floor)  
01099 Dresden

## Find it here!



## Parking during your stay

search nearby or use the paid parking garage next to the Blechschiess

## Breakfast options

in various bakeries and breakfast restaurants nearby



Small room with 3 beds



Bathroom



Large room with 4 beds



## scheune e.V.

Alaunstr. 36-40  
01099 Dresden  
Germany

## Venue Specs

Page

**6**

## www.scheune.org

fb.com/scheunedresden  
ph.: (+49) 0351 323 556  
info@scheune.org

# CONTACTS

## ADDRESS

scheune e.V.  
Alaunstrasse 36-40  
01099 Dresden  
Germany

## CONTRACTING PARTNER

scheune e.V.  
ceo: Romy Jaehnig

**Phone** 0049 (0)351 32355640  
**Mail** info@scheune.org  
**Website** www.scheune.org

**Facebook** facebook.com/scheunedresden  
**Instagram** instagram.com/scheunedresden  
**Twitter** twitter.com/scheunedresden  
**YouTube** youtube.com/scheunedresden

## STAFF

SOUND / LIGHTING / TECH  
Falk / falk@scheune.org

BOOKING / PRODUCTION  
Frank / booking@scheune.org

PRESS / PR  
Stephan / presse@scheune.org

CEO / MANAGEMENT  
Romy / gf@scheune.org

SCHEUNE FORECOURT MANAGEMENT  
Olaf / olaf.hornuf@scheune.org

SCHEUNE AKADEMIE / MUSIC MATCH  
Ben / akademie@scheune.org

